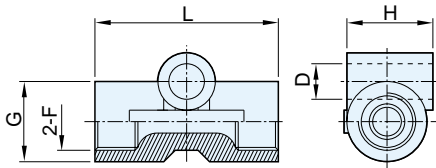


D/I/S/T/R/I/B/U/T/O/R

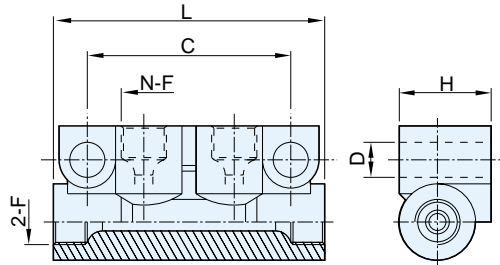
2-WAY DISTRIBUTOR



Code NO.	2 - F	L	D	G	H
10248	M8×1P	32	6.2	14	15
10268	M10×1P	32	6.2	14	15
* 10288	PT 1/8	32	6.2	14	15

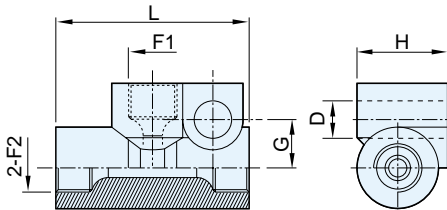
* 부분은 주문에 의한 제작품임.

DISTRIBUTOR



Code NO.	Number of Port	N - F	2 - F	L	C	H	D
20088	4(2P)	M8×1P	M8×1P	48	36	17	φ6.2
* 20081		M8×1P	M10×1P	48	36	17	φ6.2
* 20011		M10×1P	M10×1P	48	36	17	φ6.2
20181		PT 1/8	M10×1P	48	36	17	φ6.2
* 20118		M10×1P	PT 1/8	48	36	17	φ6.2
30088	5(3P)	M8×1P	M8×1P	64	52	17	φ6.2
* 30081		M8×1P	M10×1P	64	52	17	φ6.2
* 30011		M10×1P	M10×1P	64	52	17	φ6.2
30181		PT 1/8	M10×1P	64	52	17	φ6.2
* 30118		M10×1P	PT 1/8	64	52	17	φ6.2
40088	6(4P)	M8×1P	M8×1P	80	68	17	φ6.2
* 40081		M8×1P	M10×1P	80	68	17	φ6.2
* 40011		M10×1P	M10×1P	80	68	17	φ6.2
40181		PT 1/8	M10×1P	80	68	17	φ6.2
* 40118		M10×1P	PT 1/8	80	68	17	φ6.2
50088	7(5P)	M8×1P	M8×1P	96	84	17	φ6.2
* 50081		M8×1P	M10×1P	96	84	17	φ6.2
* 50011		M10×1P	M10×1P	96	84	17	φ6.2
50181		PT 1/8	M10×1P	96	84	17	φ6.2
* 50118		M10×1P	PT 1/8	96	84	17	φ6.2
60088	8(6P)	M8×1P	M8×1P	112	100	17	φ6.2
* 60081		M8×1P	M10×1P	112	100	17	φ6.2
* 60011		M10×1P	M10×1P	112	100	17	φ6.2
60181		PT 1/8	M10×1P	112	100	17	φ6.2
* 60118		M10×1P	PT 1/8	112	100	17	φ6.2
80088	10(8P)	M8×1P	M8×1P	144	132	17	φ6.2
* 80081		M8×1P	M10×1P	144	132	17	φ6.2
* 80011		M10×1P	M10×1P	144	132	17	φ6.2
80181		PT 1/8	M10×1P	144	132	17	φ6.2
* 80118		M10×1P	PT 1/8	144	132	17	φ6.2

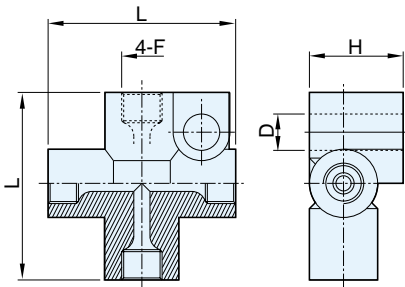
3-WAY DISTRIBUTOR(Tee)



Code NO.	F1	2 - F2	L	D	G	H
10088	M8×1P	M8×1P	32	6.2	17	16
* 10081	M8×1P	M10×1P	32	6.2	17	16
10011	M10×1P	M10×1P	32	6.2	17	16
* 10181	PT 1/8	M10×1P	32	6.2	17	16
* 10118	M10×1P	PT 1/8	32	6.2	17	16

* 부분은 주문에 의한 제작품임.

4-WAY DISTRIBUTOR(Cross)



Code NO.	4 - F	L	H	D
44081	M8×1P	32	16	φ6.2
44011	M10×1P	32	16	φ6.2
* 44018	PT 1/8	32	16	φ6.2

* 부분은 주문에 의한 제작품임.

* 부분은 주문에 의한 제작품임.